
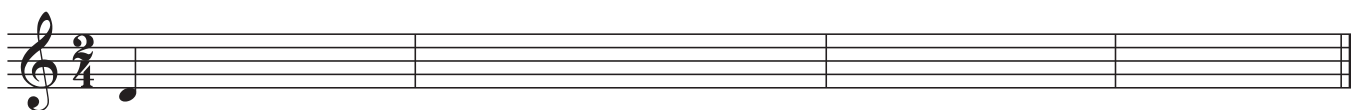


Fr. Neumann

1 

Hindemith

2 

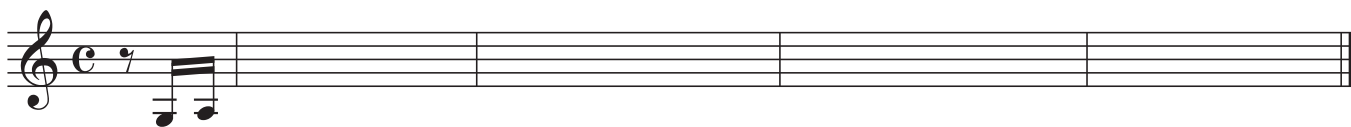
Bartok

3 


Hindemith

4 

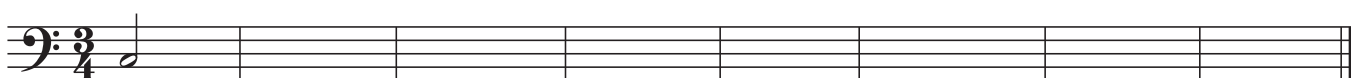
Bartok

5 

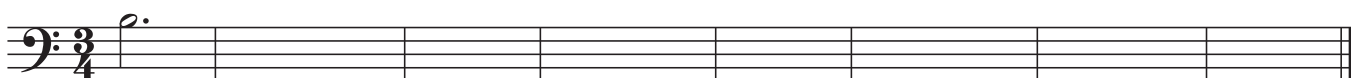
Bartok

6 

Hindemith

7 

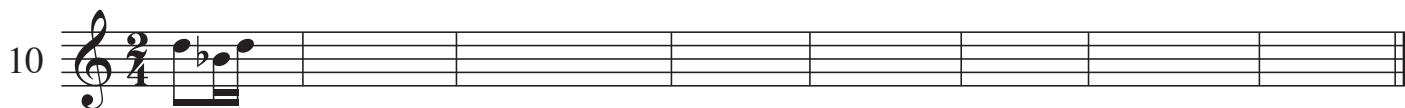
Hindemith

8 

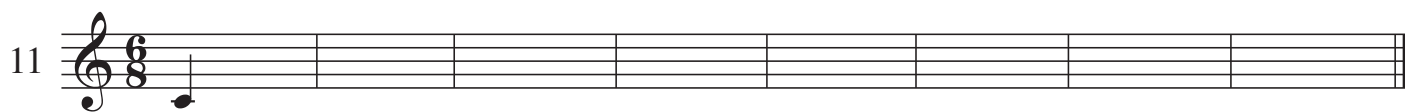
Fortner



Hindemith



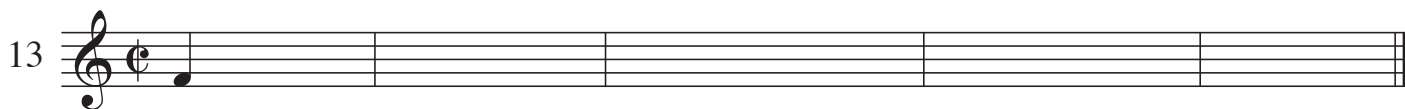
Britten



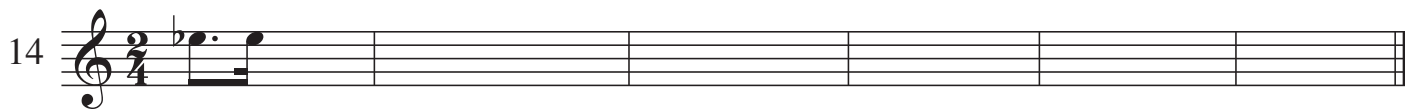
Hindemith



Hindemith



Hindemith

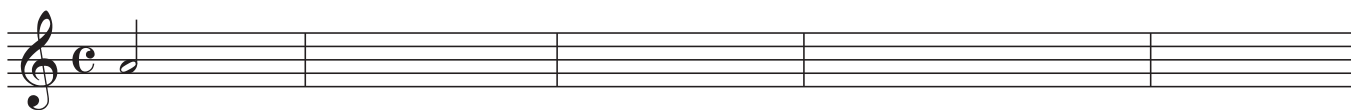


Berg

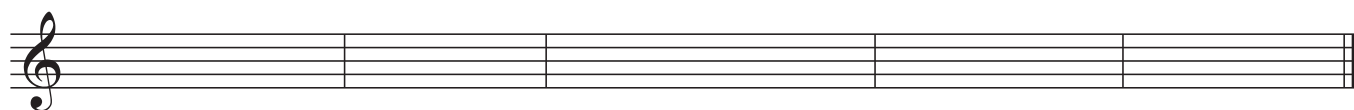


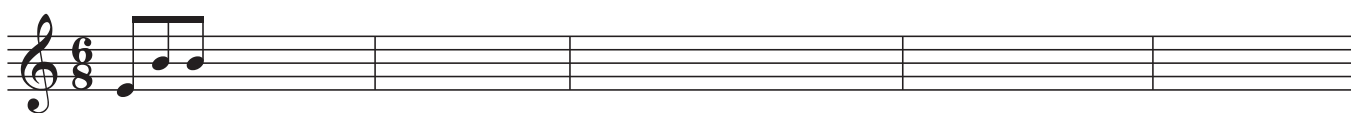
Hindemith



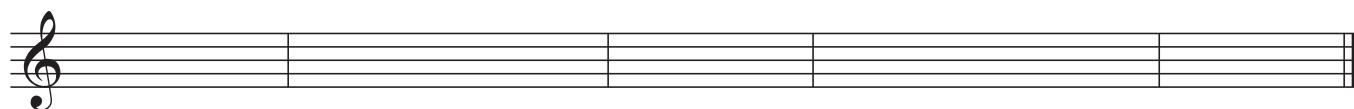
17  A musical staff in treble clef with a common time signature (C). The first measure contains a single quarter note on the middle C line. The rest of the staff is empty.

Fr. Neumann

 An empty musical staff in treble clef, divided into five measures.

18  A musical staff in treble clef with a 3/8 time signature. The first measure contains a quarter note on G4 followed by two eighth notes on A4 and B4. The rest of the staff is empty.

Hindemith

 An empty musical staff in treble clef, divided into five measures.