

01

Musical notation for exercise 01: Treble clef, 2/4 time signature, key signature of one flat (Bb). The exercise consists of a four-note eighth-note melody in the first measure and a single quarter note in the fourth measure.

02

Musical notation for exercise 02: Bass clef, 2/4 time signature, key signature of three sharps (F#, C#, G#). The exercise consists of a two-note eighth-note melody in the first measure and a single quarter note in the fourth measure.

03

Musical notation for exercise 03: Treble clef, 2/4 time signature, key signature of two flats (Bb, Eb). The exercise consists of a four-note eighth-note melody in the first measure and a single quarter note in the fourth measure.

04

Musical notation for exercise 04: Bass clef, 2/4 time signature, key signature of three flats (Bb, Eb, Ab). The exercise consists of a two-note eighth-note melody in the first measure and a single quarter note in the fourth measure.

05

Musical notation for exercise 05: Treble clef, 2/4 time signature, key signature of no sharps or flats. The exercise consists of a two-note eighth-note melody in the first measure and a single quarter note in the fourth measure.

06

Musical notation for exercise 06: Bass clef, 2/4 time signature, key signature of three flats (Bb, Eb, Ab). The exercise consists of a triplet of three eighth notes in the first measure and a single quarter note in the fourth measure.

07



08



09



10



11



12



13



14



15



16



17



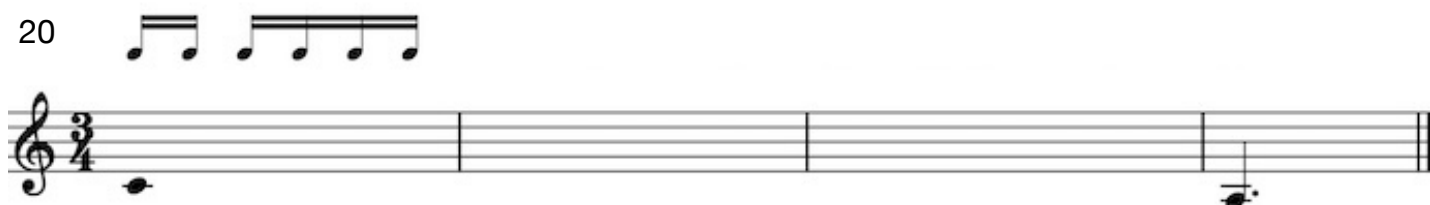
18



19



20



21



22



23



24



25

Musical notation for exercise 25: Treble clef, key signature of three sharps (F#, C#, G#), 3/4 time signature. The staff contains a whole note on G5, followed by three empty measures, and a dotted half note on G5.

26

Musical notation for exercise 26: Treble clef, key signature of one sharp (F#), 2/4 time signature. The staff contains a quarter note on G4, followed by two empty measures, and a quarter note on G4.

27

Musical notation for exercise 27: Bass clef, key signature of three flats (Bb, Eb, Ab), 3/4 time signature. The staff contains a triplet of eighth notes on G2, followed by two empty measures, and a dotted half note on G2.

28

Musical notation for exercise 28: Treble clef, key signature of two flats (Bb, Eb), 3/4 time signature. The staff contains a whole note on G4, followed by three empty measures, and a quarter note on G4.

29

Musical notation for exercise 29: Treble clef, key signature of four sharps (F#, C#, G#, D#), 3/4 time signature. The staff contains a whole note on G5, followed by two empty measures, and a dotted half note on G5.

30

Musical notation for exercise 30: Treble clef, key signature of two sharps (F#, C#), 2/4 time signature. The staff contains a triplet of eighth notes on G4, followed by three empty measures, and a quarter note on G4.